

PERFORMANCE:

THE OVERALL PRODUCT MUST COMPLY WITH THE PERFORMANCE REQUIREMENTS AS SPECIFIED IN THE PRODUCT QUALIFICATION/VERIFICATION TEST PLANS.

METAL/METALLIC COMPONENTS MUST PASS 24 HR F100.201 G85 SALT SPRAY.

APPLICABLE STANDARDS:

- A. G300_055 - SANITARY LOGO SPECIFICATIONS
- B. ANSI/KCMA A161.1 (APPLICABLE TESTS)
- C. H100_015 - MIRROR STANDARD
- D. PEP-RML-001 RESTRICTED MATERIAL LIST

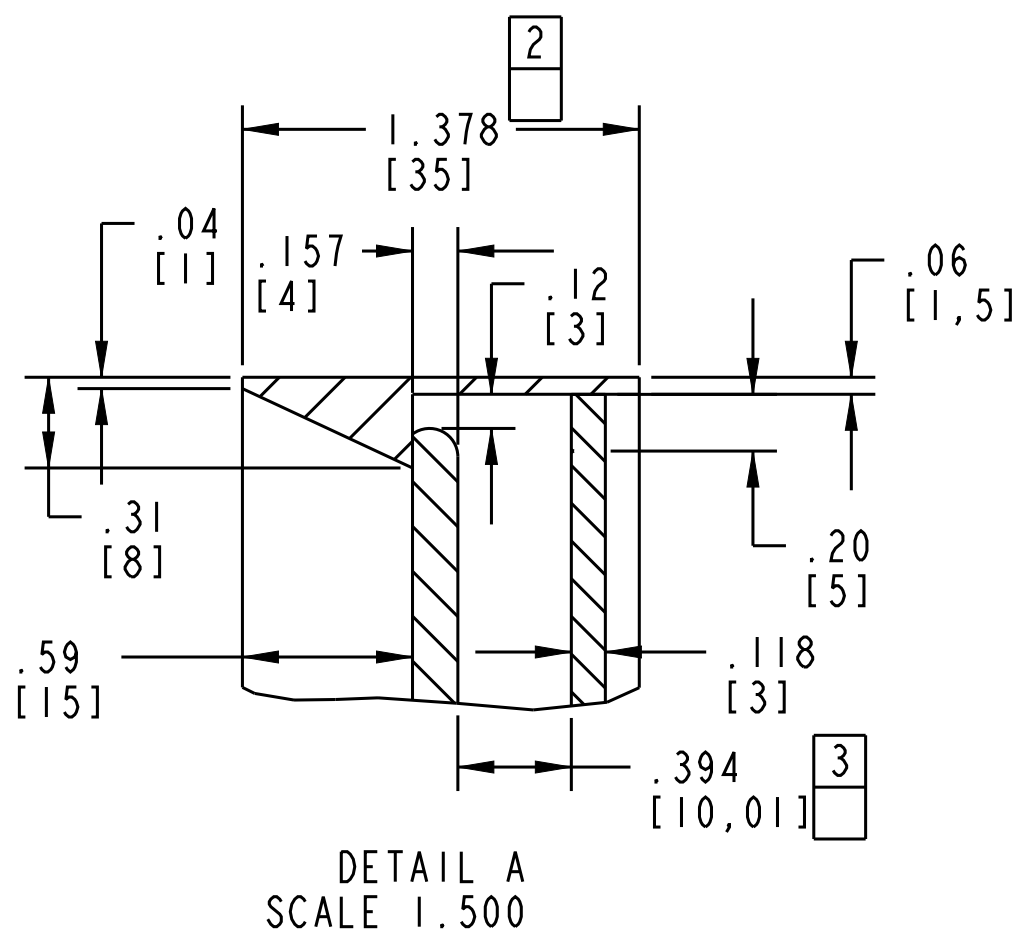
NOTES:

1. THERE ARE 3 CUSTOMER CHARACTERISTIC SYMBOLS ON THIS DRAWING.
2. COLOR MATCH AND APPROVAL BASED ON RANGE/MASTER BOARD APPROVAL (L.A.B.) AS SPECIFIED BY DESIGN.
3. REFERENCE CAD MODEL 1426285 FOR SPECIFIC CAD GEOMETRY
4. REFERENCE THE BILL OF MATERIALS FOR HARDWARE

REGULATION AND COMPLIANCE REQUIREMENTS-

CALIFORNIA PROPOSITION 65:

- A. IDENTIFICATION OF PROP 65 CHEMICALS IN ALL MATERIALS
- B. KOHLER ENGINEERING WILL DEFINE LABELING REQUIREMENT IF KNOWN CHEMICALS ARE PRESENT.



SECTION A-A

ALL DIMENSIONS IN: INCHES[MM]				DIMENSIONING AND TOLERANCING PER ASME Y14.5M-1994				
				TOLERANCES UNLESS OTHERWISE SPECIFIED	APPROVED MARTINEZ CLAUDIA IVETTE	DATE 03.24.20	PLOT DATE 08.20.20	SCALE 1.000
					DRAWN SVP	DATE 03.24.20	CHECKED	DWG C
				.XXX ± 0.001	DO NOT SCALE DRAWING			PRO/E C
				.XX ± 0.01	THIRD ANGLE PROJECTION			SIZE
				.X ± 0.1	KOHLER			ASSEMBLY NAME: 1426285
				ANG ± 0.5	KOHLER CO. KOHLER, WISCONSIN 53044			
					DESCRIPTION			
					ROUND MIRROR 28" ASSEMBLY			
					DWG. NO. 1426285			SHT 1 OF 1
DWG REVISION RECORD				THIS DRAWING IN DESIGN AND DETAILS IS THE PROPERTY OF KOHLER CO. AND MAY NOT BE USED EXCEPT IN CONNECTION WITH KOHLER CO. WORK. ALL RIGHTS OF DESIGN OR INVENTION ARE RESERVED.				
I	-	SDK	SEE PCI #P2014445	08.20.20				
SHT	SYM	BY	DESCRIPTION	DATE				

4

3

2

1